

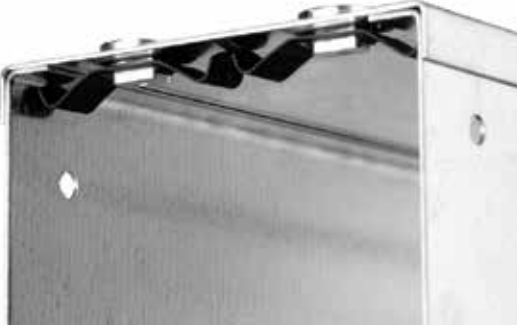


# STANDARD TRUNKING



# STANDARD TRUNKING

## Standard Trunking



**British Standard** Complies with BS EN 50085

**FULL TECHNICAL SUBMITTAL AVAILABLE ON REQUEST**

**Standard Finish** Hot-Dip Pre-Galvanised to BS EN 10346

Code Suffix **/G**

**Special Finish** Epoxy Powder Coated Black/White

Code Suffix **/EP**

**Standard Length** 3.0 metres

Each length comprises of trunking body, trunking lid, 1 coupler, 8 x (M5 x 8 screw and nut).

Lid is secured by turnbuckle fasteners.

Earth continuity link must be ordered separately if required.

IP4X Length Cover Straps must be ordered separately for lengths only.

Accessories do not require cover straps.

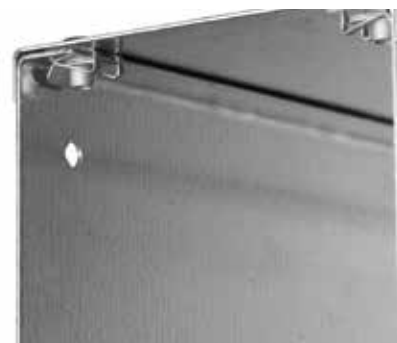
Standard Trunking Lid is available to order separately.

Epoxy Powder Coated & Multi-Compartment Standard Trunking is made to order.

Trunking Size (mm) Width x Height	Product Code		
	1 Compartment	2 Compartment	3 Compartment
50 x 50	TL3/22		
75 x 50	TL3/32	TL3/32/2	
75 x 75	TL3/33	TL3/33/2	
100 x 50	TL3/42	TL3/42/2	
100 x 75	TL3/43	TL3/43/2	
100 x 100	TL3/44	TL3/44/2	
150 x 50	TL3/62	TL3/62/2	TL3/62/3
150 x 75	TL3/63	TL3/63/2	TL3/63/3
150 x 100	TL3/64	TL3/64/2	TL3/64/3
150 x 150	TL3/66	TL3/66/2	TL3/66/3

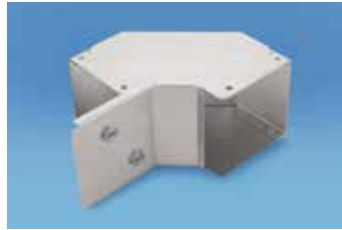
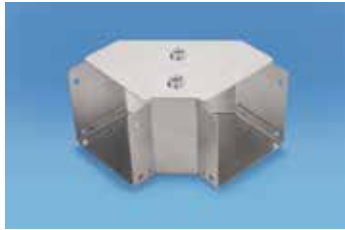
## Screw Fixed Trunking

- Screw fixed trunking is fastened using an M5 screw.
- Security screws Torx TR T25 are available to order separately.
- Screw fixed trunking is made to order.
- Specification is as per turnbuckle trunking.
- Order details - substitute T with S on all product codes.



# STANDARD TRUNKING

## Accessories

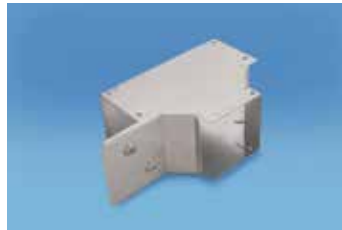


### Gusset Bends

**TB1**/(Size)  
Top Lid

**TB2**/(Size)  
Internal Lid

**TB3**/(Size)  
External Lid



### Gusset Tees

**TT1**/(Size)  
Top Lid

**TT2**/(Size)  
Internal Lid

**TT3**/(Size)  
External Lid



### Elbow Bends

**TB1L**/(Size)  
Top Lid

**TB2L**/(Size)  
Internal Lid

**TB3L**/(Size)  
External Lid



### Elbow Tees

**TT1L**/(Size)  
Top Lid

**TT2L**/(Size)  
Internal Lid

**TT3L**/(Size)  
External Lid



### 45° Bends

**TH1**/(Size)  
Top Lid

**TH2**/(Size)  
Internal Lid

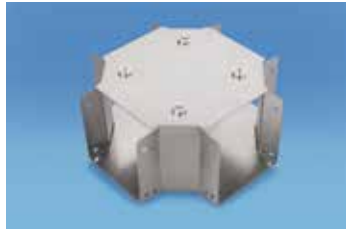
**TH3**/(Size)  
External Lid

**ORDERING DETAILS** - e.g. Gusset bend with top lid for 50 x 50mm trunking.  
Product Code TB1/+ Size 22 = TB1/22

Lid is available to order separately.

# STANDARD TRUNKING

## Accessories



**TX/(Size)**  
4-Way Crosspiece



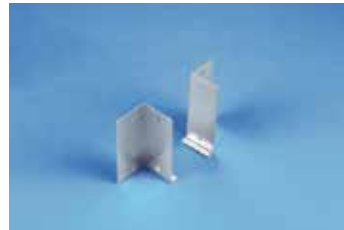
**TR/(Size)/(Size)**  
Reducer



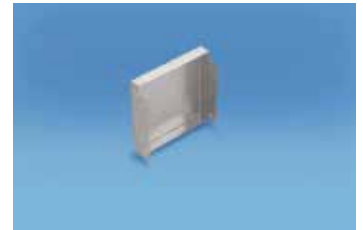
**TCO/(Size)**  
Fitting Coupler



**TFTC/(Size)**  
Flanged Tee Connector



**TFC/(Height)**  
Flanged Connector



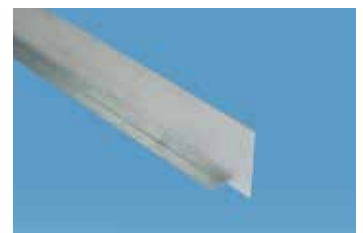
**TSE/(Size)**  
Stop End



**TSH/(Size)**  
Suspension Hanger  
(11mm hole)



**TSP/(Width)** Single Socket  
**TTP/(Width)** Twin Socket  
Socket Plate



**TLDV3/(Height)**  
Loose Trunking Division



**TDS/(Width)**  
IP4X Length Cover Strap



**TCR/(Width)**  
Cable Retainer



**TPR/(Size)**  
Pin Rack

## Spares



**TEL100**  
Earth Link



**TSC/(Size)**  
Standard Coupler



**SFX100**  
Screw Fixed Lid Insert and Screw



**TFX100**  
Fixing Screws and Nuts



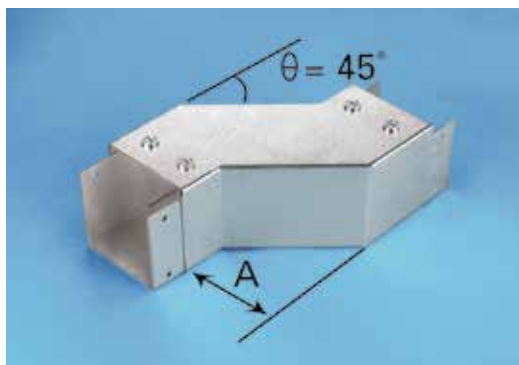
**TFU100**  
Turnbuckle Fastener Unit



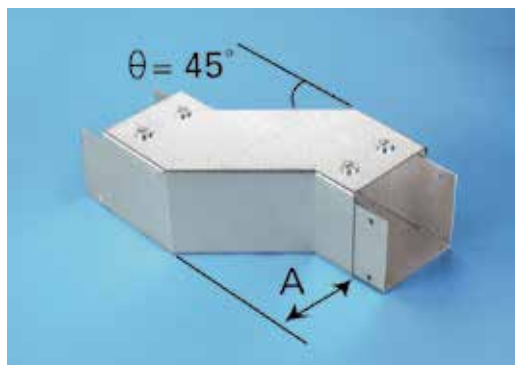
**SMD400**  
Security Screw Torx TR T25

# STANDARD TRUNKING

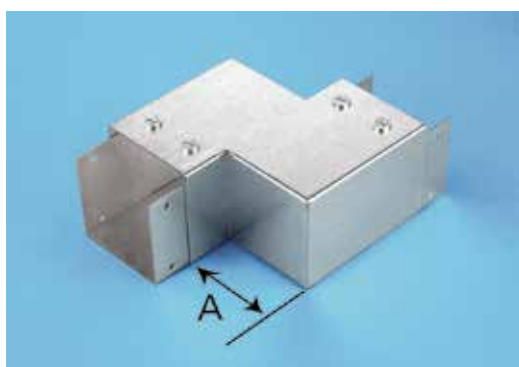
## Specials



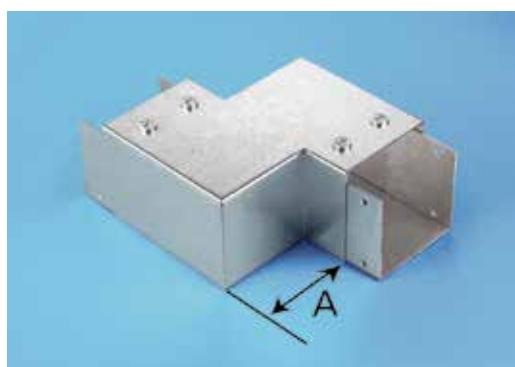
**THOR**/(Size)  
Horizontal Offset (right hand)



**THOL**/(Size)  
Horizontal Offset (left hand)



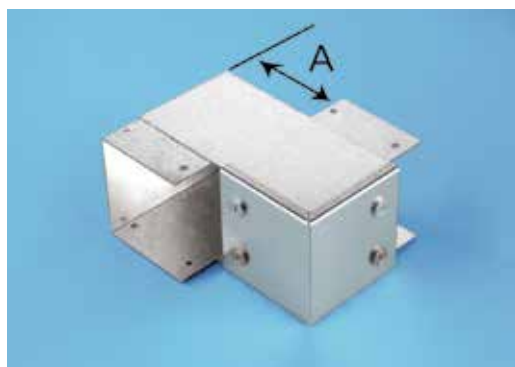
**THAR**/(Size)  
Horizontal Angled Offset (right hand)



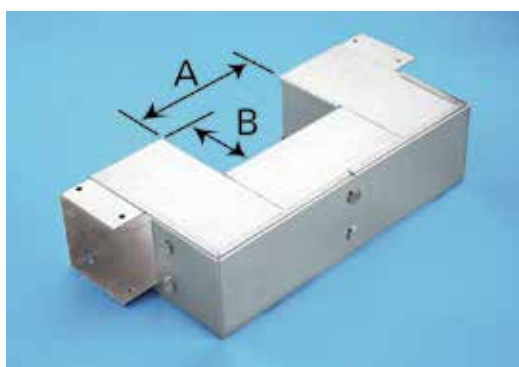
**THAL**/(Size)  
Horizontal Angled Offset (left hand)



**TVO**/(Size)  
Vertical Offset



**TVA**/(Size)  
Vertical Angle Offset

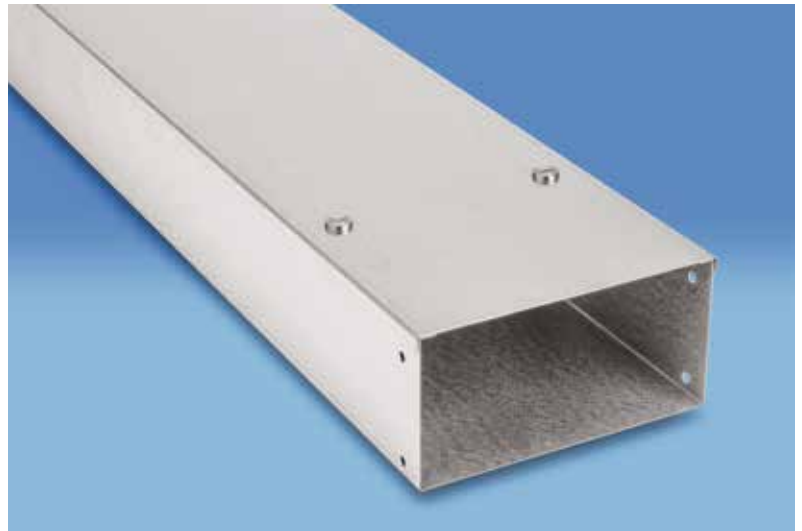
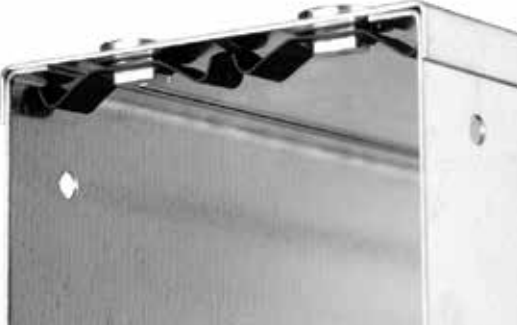


**TPS**/(Size)  
Pier Set

Please state dimension A  
when ordering.  
Please state dimensions A and B  
for Pier Set.

# STANDARD TRUNKING

## Oversize Standard Trunking



**British Standard** Complies with BS EN 50085

**FULL TECHNICAL SUBMITTAL AVAILABLE ON REQUEST**

**Standard Finish** Hot-Dip Pre-Galvanised to BS EN 10346

Code Suffix **/G**

**Special Finish** Epoxy Powder Coated Black/White

Code Suffix **/EP**

**Standard Length** 3.0 metres

All Oversized Trunking is made to order.

Each length comprises of trunking body, 2x1.5m trunking lids, 1 coupler, 8 x (M5 x 8 screw and nut).

Lid is secured by turnbuckle fasteners.

Earth continuity link must be ordered separately if required.

IP4X Length Cover Straps must be ordered separately for lengths only.

Accessories do not require cover straps.

Oversize Trunking Lid is available to order separately.

Trunking Size (mm) Width x Height	Product Code			
	1 Compartment	2 Compartment	3 Compartment	4 Compartment
200 x 50	TL3/82	TL3/82/2	TL3/82/3	TL3/82/4
200 x 75	TL3/83	TL3/83/2	TL3/83/3	TL3/83/4
200 x 100	TL3/84	TL3/84/2	TL3/84/3	TL3/84/4
200 x 150	TL3/86	TL3/86/2	TL3/86/3	TL3/86/4
200 x 200	TL3/88	TL3/88/2	TL3/88/3	TL3/88/4
225 x 50	TL3/92	TL3/92/2	TL3/92/3	TL3/92/4
225 x 75	TL3/93	TL3/93/2	TL3/93/3	TL3/93/4
225 x 100	TL3/94	TL3/94/2	TL3/94/3	TL3/94/4
225 x 150	TL3/96	TL3/96/2	TL3/96/3	TL3/96/4
225 x 200	TL3/98	TL3/98/2	TL3/98/3	TL3/98/4
225 x 225	TL3/99	TL3/99/2	TL3/99/3	TL3/99/4
300 x 50	TL3/122	TL3/122/2	TL3/122/3	TL3/122/4
300 x 75	TL3/123	TL3/123/2	TL3/123/3	TL3/123/4
300 x 100	TL3/124	TL3/124/2	TL3/124/3	TL3/124/4
300 x 150	TL3/126	TL3/126/2	TL3/126/3	TL3/126/4
300 x 200	TL3/128	TL3/128/2	TL3/128/3	TL3/128/4
300 x 225	TL3/129	TL3/129/2	TL3/129/3	TL3/129/4
300 x 300	TL3/1212			

## Screw Fixed Trunking

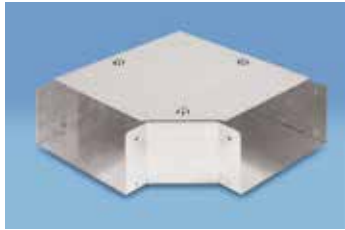
- Screw fixed trunking is fastened using an M5 screw.
- Security screws Torx TR T25 are available to order separately.
- Screw fixed trunking is made to order.
- Specification is as per turnbuckle trunking.
- Order details - substitute T with S on all product codes.



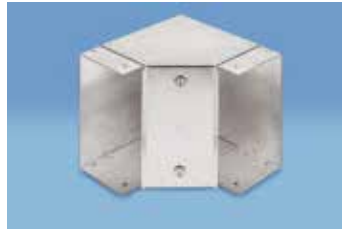
# STANDARD TRUNKING

## Oversize Accessories

### Gusset Bends



**TB1**/(Size)  
Top Lid

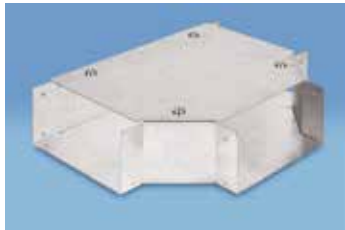


**TB2**/(Size)  
Internal Lid



**TB3**/(Size)  
External Lid

### Gusset Tees



**TT1**/(Size)  
Top Lid

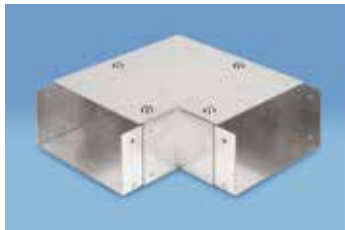


**TT2**/(Size)  
Internal Lid



**TT3**/(Size)  
External Lid

### Elbow Bends



**TB1L**/(Size)  
Top Lid

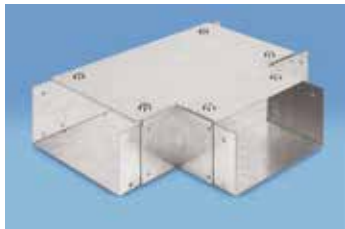


**TB2L**/(Size)  
Internal Lid



**TB3L**/(Size)  
External Lid

### Elbow Tees



**TT1L**/(Size)  
Top Lid



**TT2L**/(Size)  
Internal Lid



**TT3L**/(Size)  
External Lid

### 45° Bends



**TH1**/(Size)  
Top Lid



**TH2**/(Size)  
Internal Lid



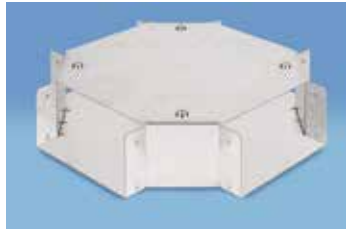
**TH3**/(Size)  
External Lid

**ORDERING DETAILS** - e.g. Gusset bend with top lid for 200 x 50mm trunking.  
Product Code TB1/+ Size 82 = TB1/82

Lid is available to order separately.

# STANDARD TRUNKING

## Accessories



**TX/(Size)**  
4-Way Crosspiece



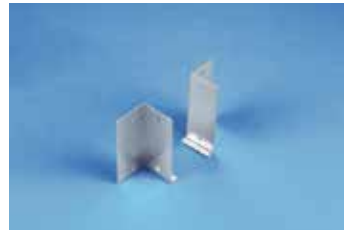
**TR/(Size)/(Size)**  
Reducer



**TCO/(Size)**  
Fitting Coupler



**TFTC/(Size)**  
Flanged Tee Connector



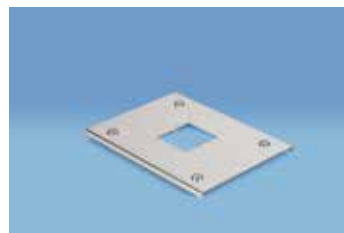
**TFC/(Height)**  
Flanged Connector



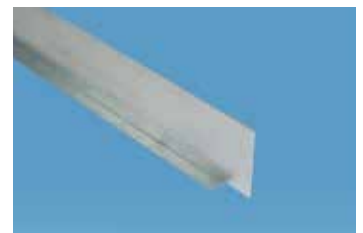
**TSE/(Size)**  
Stop End



**TSH/(Size)**  
Suspension Hanger  
(11mm hole)



**TSP/(Width) Single Socket**  
**TTP/(Width) Twin Socket**  
Socket Plate



**TLDV3/(Height)**  
Loose Trunking Division



**TDS/(Width)**  
IP4X Length Cover Strap



**TCR/(Width)**  
Cable Retainer



**TPR/(Size)**  
Pin Rack

## Spares



**TEL100**  
Earth Link



**TSC/(Size)**  
Standard Coupler



**SFX100**  
Screw Fixed Lid Insert and Screw



**TFX100**  
Fixing Screws and Nuts



**TFU100**  
Turnbuckle Fastener Unit



**SMD400**  
Security Screw Torx TR T25